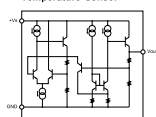


# ■ SCHEMATIC DIAGRAM (MAIN)

IC102 : LM61CIZ  
Temperature Sensor



NOTICE (note1)  
(J)..... JAPAN  
(U)..... U.S.A  
(C)..... CANADA  
(R)..... GENERAL  
(T)..... CHINA  
(K)..... KOREA  
(A)..... AUSTRALIA  
(B)..... BRITISH  
(G)..... EUROPE  
(L)..... SINGAPORE  
(E)..... SOUTH EUROPE  
(V)..... TAIWAN

REMARKS	PARTS NAME
NO MARK	CARBON FILM RESISTOR (P-5)
□	CARBON FILM RESISTOR (P-10)
△	METAL OXIDE FILM RESISTOR
▲	METAL FILM RESISTOR
■	METAL PLATE RESISTOR
●	FINE PROOF CARBON FILM RESISTOR
○	CEMENT MOLDED RESISTOR
◎	HEAT VARIABLE RESISTOR
■	CHIP RESISTOR

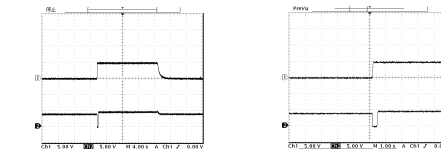
REMARKS	PARTS NAME
NO MARK	ELECTROLYTIC CAPACITOR
○	TANTALUM CAPACITOR
NO MARK	CERAMIC CAPACITOR
●	CERAMIC TUBULAR CAPACITOR
○	POLYESTER FILM CAPACITOR
○	DISSIPATIVE FILM CAPACITOR
○	MICA CAPACITOR
●	POLYPROPYLENE FILM CAPACITOR
●	SEMICONDUCTIVE CERAMIC CAPACITOR

Interchangeable Parts at Manufacture Stage

Part Number	Part Name
R1 RY103	DS0402-081H1 ALAP24 GPA-28
R2 D132 132-251-250-260	H85104 180139 180176
R3 Q254	28K3800 28K3491-E
R4 Q250-203	28C18151Y1 H70398
R5 C062	MTJ08.28 H286C10D-E

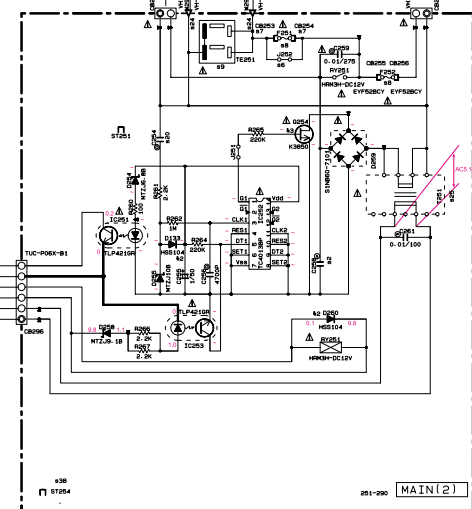
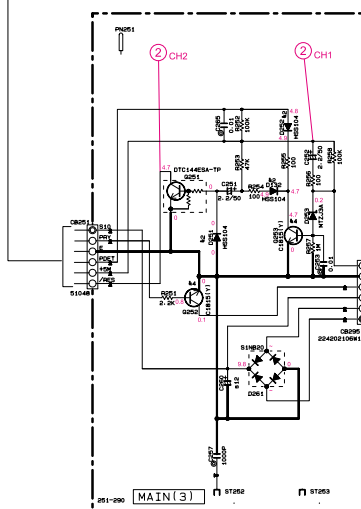
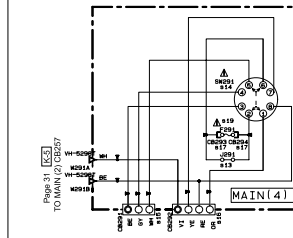
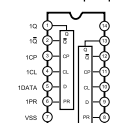
Reference No	U-C	R	A	B	B-E	L
R1 C18P-183	X	X	0.01	U080410	U080410	0.01
R1 181-182	X	X	0.01	U080410	U080410	0.01
R2 C062	X	X	0.01	U080410	U080410	0.01
R3 Q254	X	X	0.01	U080410	U080410	0.01
R4 Q250-203	X	X	0.01	U080410	U080410	0.01
R5 C062	X	X	0.01	U080410	U080410	0.01
R6 Q254	X	X	0.01	U080410	U080410	0.01
R7 Q250-203	X	X	0.01	U080410	U080410	0.01
R8 Q254	X	X	0.01	U080410	U080410	0.01
R9 Q250-203	X	X	0.01	U080410	U080410	0.01
R10 Q254	X	X	0.01	U080410	U080410	0.01
R11 Q250-203	X	X	0.01	U080410	U080410	0.01
R12 Q254	X	X	0.01	U080410	U080410	0.01
R13 Q250-203	X	X	0.01	U080410	U080410	0.01
R14 Q254	X	X	0.01	U080410	U080410	0.01
R15 Q250-203	X	X	0.01	U080410	U080410	0.01
R16 Q254	X	X	0.01	U080410	U080410	0.01
R17 Q250-203	X	X	0.01	U080410	U080410	0.01
R18 Q254	X	X	0.01	U080410	U080410	0.01
R19 Q250-203	X	X	0.01	U080410	U080410	0.01
R20 Q254	X	X	0.01	U080410	U080410	0.01
R21 Q250-203	X	X	0.01	U080410	U080410	0.01
R22 Q254	X	X	0.01	U080410	U080410	0.01
R23 Q250-203	X	X	0.01	U080410	U080410	0.01
R24 Q254	X	X	0.01	U080410	U080410	0.01
R25 Q250-203	X	X	0.01	U080410	U080410	0.01
R26 Q254	X	X	0.01	U080410	U080410	0.01
R27 Q250-203	X	X	0.01	U080410	U080410	0.01
R28 Q254	X	X	0.01	U080410	U080410	0.01
R29 Q250-203	X	X	0.01	U080410	U080410	0.01
R30 Q254	X	X	0.01	U080410	U080410	0.01

Point ②  
CH 1 : (+) of C252  
CH 2 : Collector of Q251



AC POWER ON (Connect the power cable)  
AC POWER OFF (Disconnect the power cable)  
AC POWER ON (Connect the power cable)

IC252 : TC4013BP  
Dual D Flip Flop



\* All voltages are measured with a 10MQ/V DC electronic volt meter.  
\* Components having special characteristics are marked △ and must be replaced with parts having specifications equal to those originally installed.  
\* Schematic diagram is subject to change without notice.